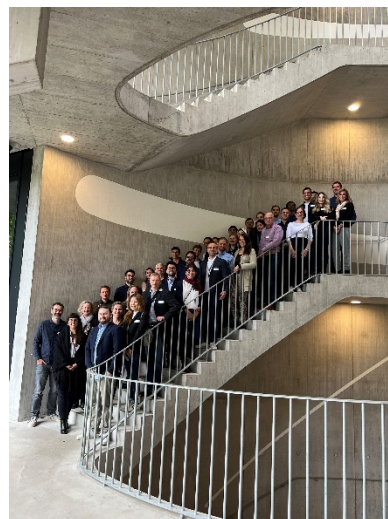


Biotechnet Conference Report: TEDD Events 2024

TEDD Visit: UPM Biomedicals and CSEM at Switzerland Innovation Park Basel Area



Quick Facts



**7 May 2024, Switzerland Innovation Park Basel Area AG,
Hegenheimermattweg 167A, 4123 Allschwil, Switzerland**



**50 Participants
Academic, SMEs, startups, clinical**



Talks by scientists, Networking Lunch, Lab Tours



**Organized by: Competence Centre TEDD, UPM Biomedical,
CSEM, SIP Basel Area**

Takeaway



The Switzerland Innovation Park Basel Area is part of Switzerland Innovation's network of science parks. Each site of the Switzerland Innovation Park Basel Area is strategically designed to support specific sectors, enabling tailored support, resources, and networking opportunities for startups and established companies. This differentiation allows focused growth and development in key areas of innovation, contributing significantly to the region's reputation as a leading global hub for healthcare, life sciences, and technology.

UPM Biomedicals stands at the forefront of innovation in the production of high-quality nanofibrillar cellulose for medical and life science applications. With over 400 patents, birch pulp-derived nanofibrillar cellulose as a biomaterial sets new standards in biocompatibility, ease of use, and sustainability, offering a versatile foundation for a broad spectrum of scientific applications.

CSEM is a Swiss technology innovation center developing advanced technologies with a high societal impact, which it then transfers to industry to strengthen the economy. The non-profit orientated, public-private organization is internationally recognized, and works to support the disruptive activities of companies in Switzerland and abroad. CSEM operates in the domains of precision manufacturing, digitalization, and sustainable energy. To accomplish its mission as gateway between research and economy, CSEM's more than 600 employees from 46 countries collaborate with leading universities, scientific institutions, research institutes, and industrial partners. With its six sites in Allschwil, Alpnach, Bern, Landquart, Neuchâtel and Zurich, CSEM is active all over Switzerland.

Session Highlights

Scientific talks

- CSEM Animal-Free Strategies for 3D Culture in Drug Discovery and Life Science Applications, Essi Niemi and Marlies Mürnseer, UPM
- Tumor Organoids in Liver Cancer Drug Discovery: The New Frontier, Dr. Sandro Nuciforo University of Basel
- Enabling technologies empowering innovation in tissue engineering and cell assays – from organoids to single cells, Dr. Stéphanie Boder-Pasche, CSEM
- Navigating Standardization and Automation in Cell Biology: Balancing Versatility and Customization, Dr. Nadine Thaler, Hamilton

Lab Tours

- CSEM Labs tour
- UPM Biomedicals booth
- Switzerland Innovation Park Basel Area Main Campus tour

TEDD Visit: The Wyss Zurich Translational Center (Wyss Zurich)



Quick Facts



3 July 2024, Wyss Zurich Translational Center, ETH Zurich/University of Zurich, Weinbergstrasse 35, WEH 8092 Zurich, Switzerland



50 Participants
Academic, SMEs, startups, clinical



Talks by scientists, Networking Lunch, Lab Tours



Organized by: Competence Centre TEDD, Wyss Zurich

Takeaway



The Wyss Zurich Translational Center (Wyss Zurich) is a unique accelerator, embedded within ETH Zurich and the University of Zurich, that is dedicated to the emerging fields of regenerative medicine, robotics, and medical devices/bionics technologies.

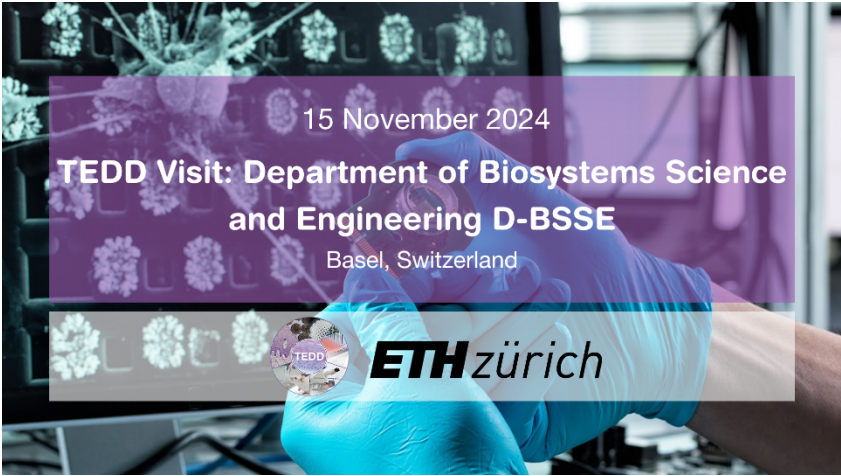
Session Highlights

- Biomedical and Robotics Technologies Platform, Stefan Bertschi, Platform Head
- Regenerative Medicine Technologies Platform, Michael Nägeli, Head of Supply Chain Management
- Clinical Trials Center, Rejelle Williams, Head Clinical Research Ward
- Liver4Life, Andrea Venturato, Product Lead
- MUVON, Deana Mohr, Project Lead
- Nanoflex, Valentin Khatchaturian, Finance Lead

Lab Tours

- Biomedical and Robotics Technologies Platform
- Regenerative Medicine Technologies Platform

TEDD Visit Department of Biosystems Science and Engineering D-BSSE



Quick Facts



15 November 2024, ETH Zurich | D-BSSE Department of Biosystems Science and Engineering, Building BSS, Klingelbergstrasse 48, 4056 Basel, Switzerland



50 Participants

Academic, SMEs, startups, clinical, international



Talks by Scientists, Lab Tour



Organized by: Competence Centre TEDD, ETH BSSE

Takeaway



D-BSSE focusses on the understanding, rational design and programming of complex biological systems from the nanoscale up to whole organisms. As an engineering department of ETH Zurich, D-BSSE advances basic and applied biological sciences with the overall goal of translating its research into biomedical and industrial applications, and promoting the development of new processes and products in the biotech, pharmaceutical and chemical industries.

To maximize the impact of this ambitious endeavour, the department was founded in 2007 in Basel, Europe's life science capital. In collaboration with partners from industry, hospitals and other academic institutions, the Basel location facilitates research applications in the emerging fields of precision medicine and personalized health, molecular systems engineering and data science.

In 2023, D-BSSE moved into a new research and laboratory building on campus Schallemtelli in close vicinity to the University of Basel, the University Hospital, and the Children's Hospital Basel.

Session Highlights

Scientific talks

- Drug tests with different models on microfluidic platforms, Prof. Dr. Petra S. Dittrich, Bioanalytics Group
- Microphysiological & microsensor systems, Prof Dr. Andreas Hierlemann, BEL – Bio Engineering Laboratory
- NCCR "Antiresist": Combatting antimicrobial resistance, Prof. Dr. Urs Jenal, Biozentrum, University of Basel

Lab Tours

- Single-cell facility
- Cleanroom
- Labs of research groups Dittrich and Hierlemann